



Extra heavy duty spring steel steel cord strain relief

Heavy duty spill proof solution tank for front-mount sprayer or center-feed options

Front-mounted machine sprayer for precise solution application

Totally enclosed fan-cooled motor for longer motor life

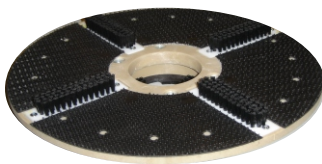
Features and Benefits

- 180 frame motor is much stronger than 1.5HP motors
- 126 lb empty weight gives more down pressure than other machines (100 lb. vs 126 lbs.)
- LESS amp draw and current usage, 9 amps vs. about 14
- Ergonomic Upper Handle Lock - no bending
- Ergonomic Trigger Spraying via normal handles - no reaching for a button
- Low 65 decibel operation - No odor cleaning, very quiet, dry in 15 minutes
- Unique circular spray pattern provides complete coverage without wetting walls, etc.
- Non-marking wheels
- Complete chrome covers
- UL/CUL Approved

Thumb operated safety switch

Dual steel operating and spraying triggers for left or right hand operation

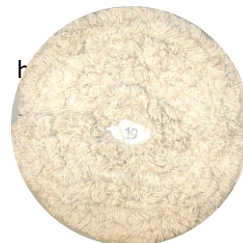
Variable angle handle adjustment fits operator's height



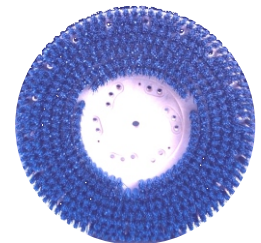
Brush-n-Bonnet Pad Driver
19" pad driver with riser for low-moisture cleaning with Camel 17" Floor Machine. **#137199**



19" Slotted Ergonomic Cleaning Pad
For Brush-n-Bonnet Pad Driver. 4 per case. **#137399**



19" Wiping Bonnet Pad
Low-profile, 100% cotton looped pad loosens and carries away released soil. 6 per case. **#136599**



17" Clean Grit Rotary Grout Brush w/NP9200 clutch plate. Softer 180 Grit multi-level bristles give superior scrubbing. **#816515**